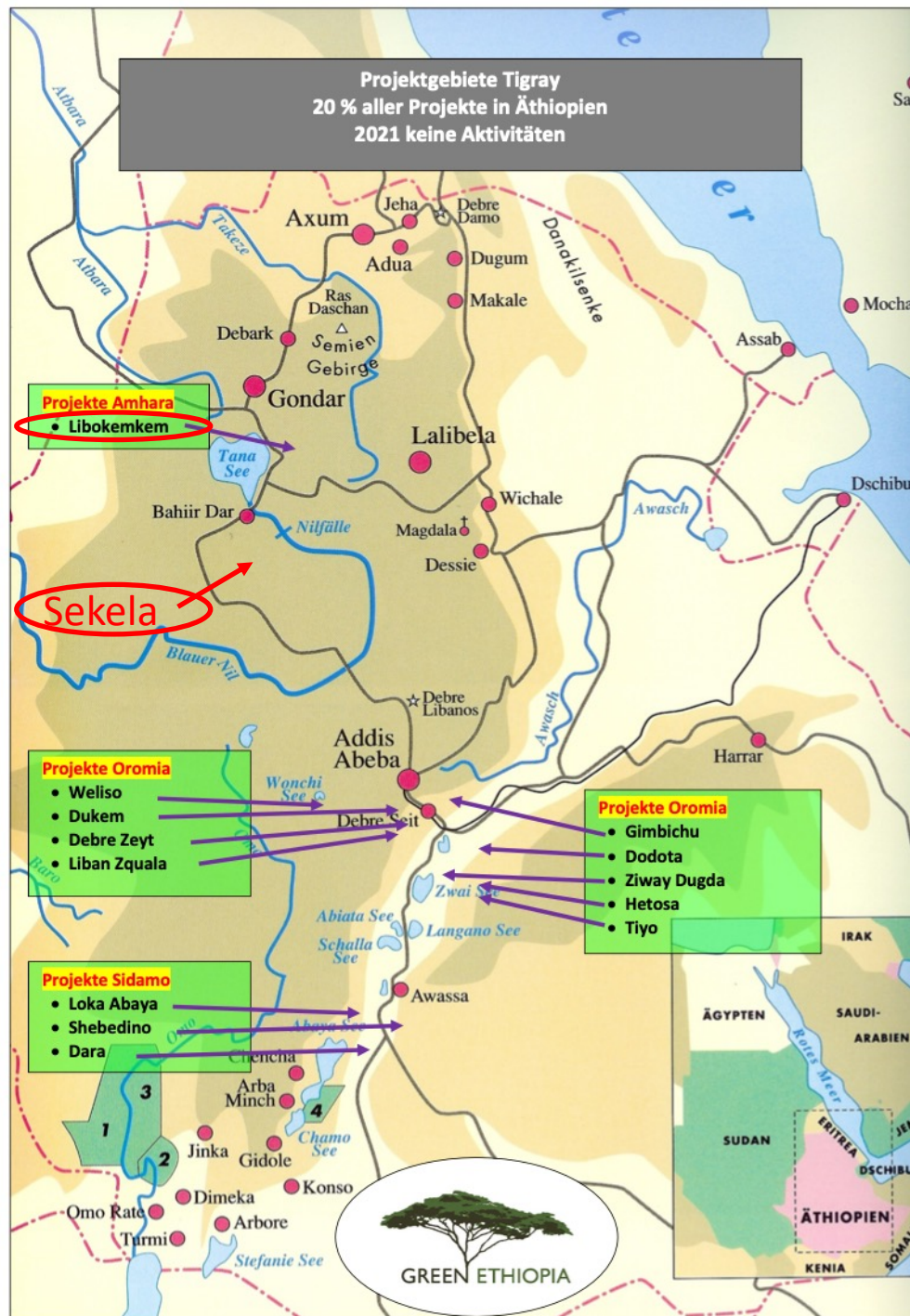


Project visit July 2022





Libokemkem, Amhara

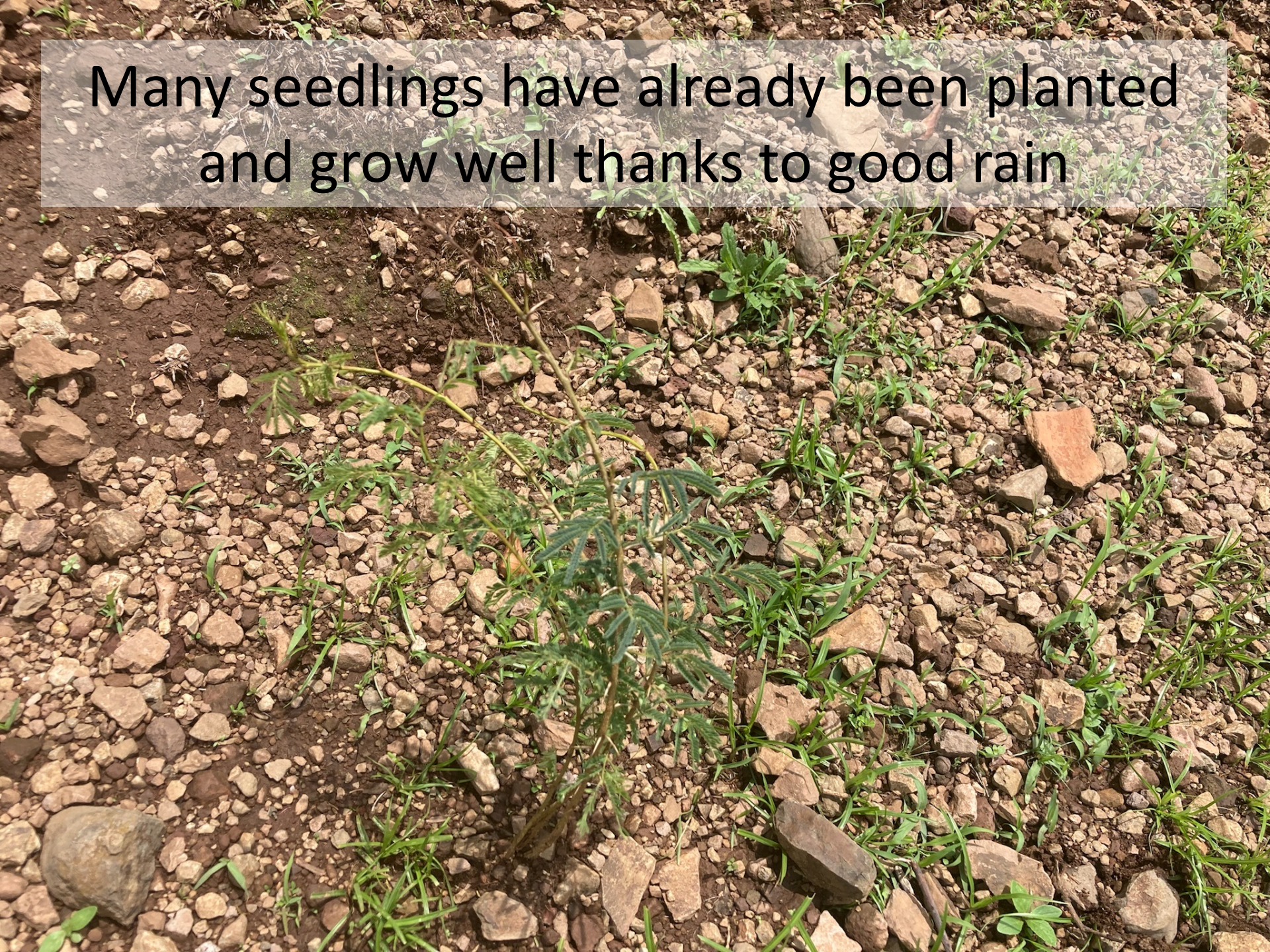
Birra & Estifanos



The hill of the current afforestation activities



Many seedlings have already been planted
and grow well thanks to good rain



Below the mountain: gully rehabilitation



Agro-forestry hedge between the fields, cut during the dry season for animal fodder





Result from previous
years:

Rope-Washer Pump,
because of the forest in
the background

Water for humans, fruit
trees, vegetables and
animals (fewer diseases)

Result after 3 years of Rope-Washer Pump: Mango trees and irrigation of maize field



Results from experience: replacing eucalyptus for construction wood/cash-crop



Libokemkem, Amhara Takern



4 year old tree nursery



Thanks to more and more water, established
this year: vegetables for workers



4 year old forest next to the nursery (i.e. the source of water, the reason for vegetables)



Green grazing area - around the year- thanks
to the forest in the back



After 4 years of forest development:
channel, 3 crop rotations, fruit trees ...



... and also these fields in the current project site will look very different in 4 years!



Many independent initiatives: here Aloe as erosion protection (and fibers for ropes)



The team of the new tree nursery



The current project mountain, in the back of
Takern village



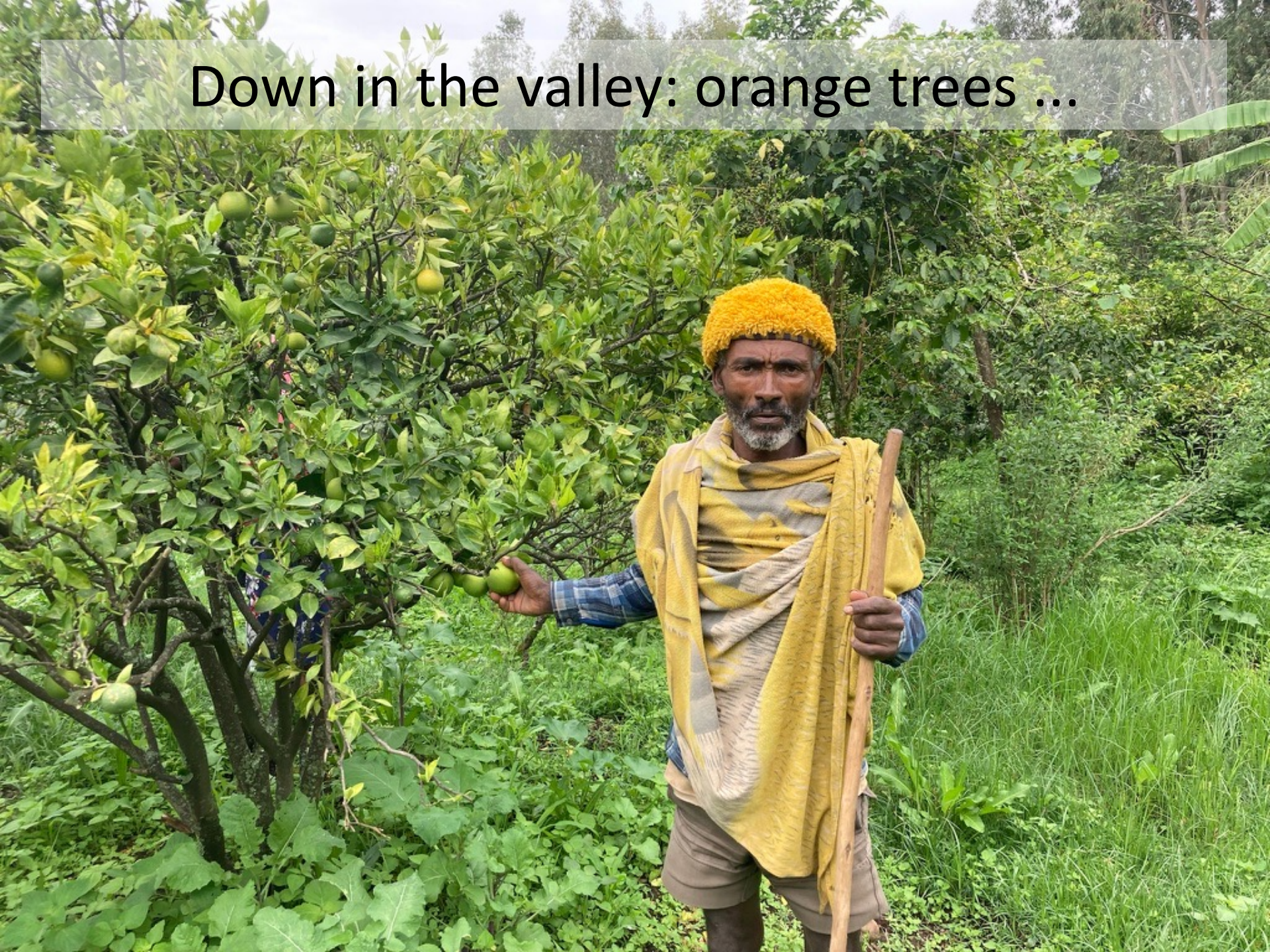
Afforestation site Takern 2022



Thanks to a good start of the rain season,
many seedlings were already planted



Down in the valley: orange trees ...



... very new trial: banana ...



... and coffee in the shade of the growing forest trees



Why are these women collecting the drinking water towards the top of the mountain, not down at the river?



Because of a new spring next to a remaining old tree after 2 years of afforestation!

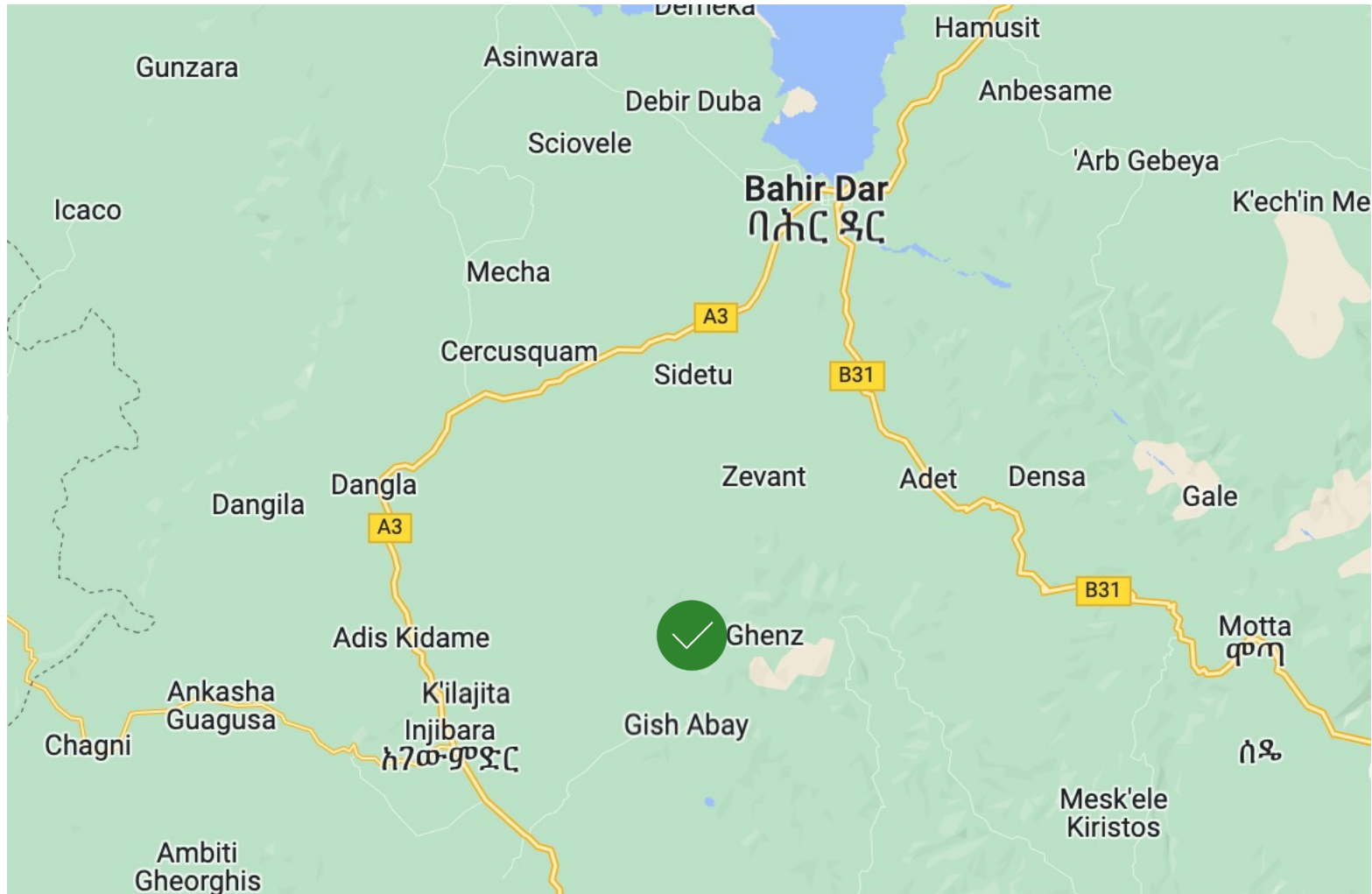


Objective achieved: Shine river is perennial,
no more flooding, year-round irrigation in
own green houses



Sekela, Amhara

Gish Abay (new site)



The team of Sekela: representatives from the office of agriculture, farmers, ORDA



Situation in the valley: significant erosion,
old trees along the riverbed



Situation on the mountain: manifold use of land and overgrazing



Erosion on the grazing land



Some farmers have already started with simple check dams for erosion protection



On the planting day, everyone takes his share of 180 seedlings from the depot ...



... and they are planted on the top of
the mountain



Call for participation on planting



Everyone joins in



lasting encounters with people



Seedling plantation with the head of the Sekela office of agriculture



Lunch on the field: the only sample food left are potatoes



Roads in a rural village during the rain season

